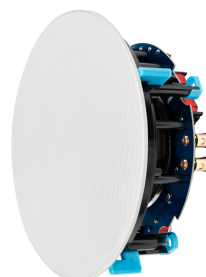


## DW2230 DW2230S

### 2×30W WiFi Active Ceiling Speaker System



30W DW2230 Master Ceiling Speaker



30W DW2230S Slave Ceiling Speaker



## Description

The DW2230 DW2230S WiFi Active Ceiling Speaker System is a 2×30W 6.5" active WiFi ceiling speaker system featuring a master and slave speaker, delivering 60W of power for a true stereo effect. It supports AirPlay, DLNA, and QPlay protocols, with WiFi, Bluetooth, and line input, all of which can be easily switched via a mobile app. With a high-definition digital amplifier and precisely tuned crossover, it delivers deep bass and crisp highs.

Equipped with an integrated amplifier output, it can connect to a slave speaker for stereo playback or expand into a master-slave setup, with one master speaker and up to three slave speakers, achieving a total power of 100W for an immersive audio experience. Additionally, the system supports multi-room control, allowing you to add multiple WiFi ceiling speakers to your network for synchronized or independent playback, creating a seamless whole-house audio solution.

## Features

- Support Airplay, DLNA , QPlay and other protocols through WIFI or network cable to achieve LAN push play.
- Get rid of the traditional wiring, one cable to complete the installation and deployment (WIFI connection, only need to connect the power cord; or you can connect the device through a POE cable)
- WIFI, BT and LINE-IN (line-in) three kinds of audio sources, use mobile phone APP to switch freely.
- Output 24bit/48Khz sampling rate, the use of high-definition digital amplifier, with crossover, to achieve the ultimate audio experience effect of shocking and powerful bass and penetrating treble.
- Equipped with an amplifier output, it can connect to a slave speaker to form a master-slave stereo system with left and right channels, delivering a total power of 60W. Alternatively, a master speaker can be paired with three slave speakers to create a dual left and right channel setup with a total power of 100W, ensuring high-quality stereo playback.

- Multi-room control function, add multiple WiFi ceiling speakers to your network, you can play different music or the same music separately through the APP, to form a wireless multi-room whole-house audio system (multi-room), it will provide you with a new experience to play and enjoy your music!
- The speaker unit features a bright blue paper cone and a super-narrow bezel with a magnetic grille design. Inside, it adopts a high-quality coaxial driver design, paired with a crossover that has been carefully tuned by development engineers. This results in more distinct highs and lows, with a more refined sound. It is widely applicable in various sound-quality-focused locations such as villas, gyms, showrooms, meeting rooms, high-end branded stores, and upscale Chinese and Western restaurants.

## Specifications

Model	DW2230
Speaker Unit	6.5" Woofer×1, 1" Tweeter
Sensitivity (1W@1m)	88dB
Network Interface	External Standard RJ45, 10M/100M Ethernet Port
Wireless Parameter	Supports 802.11b/g/n Wireless Network
Input Power	48V POE++ or External 24V DC-5A Power Supply (Optional)
Pairing Reset Button	Press and Hold for 5 Seconds to Restore Factory Settings
Local Audio Input	200mVrms
Rated Impedance	8Ω
Audio Input	BT5.0, AUX IN
Network Push	WiFi 2.4G and LAN
Music Streaming Protocol	Airplay, DLNA, QPlay, etc.
Audio Format	MP3/AAC/FLAC/ALAC/WMA/APE/WAV/OGG, etc
Music Source	Tunein/iHeartRadio/TIDAL/Napster/Qobuz, etc
Operating Voltage	48V POE++ (IEEE802.3bt) or optional DC24V-5A adapter
Output Power	30W×2 (POE++ Power Supply) or 50W×2 (DC Power Supply) (Optional)
Frequency Response	55Hz-22kHz
Material	Panel & Rear Shell: ABS, Mesh: Iron
Color	Unit: Blue, Frame: Black, Grille: White
Product Dimension	Φ220*110H mm
Cut-Out Dimension	Φ205mm
Device Depth (mm)	115mm
Installation	4-Prong Rotating Mounting Bracket
Product Net Weight	1.5kg

Model	DW2230S
Speaker Unit	6.5" Woofer×1, 1" Tweeter
Rated Impedance	8Ω
Rated Power	30W
Max. Power	60W
Sensitivity (1W@1m)	88dB
Frequency Response	55Hz-22kHz

Material	Panel & Rear Shell: ABS, Mesh: Iron
Color	Black
Product Dimension	Φ220*90H mm
Cut-Out Dimension	Φ205mm
Device Depth (mm)	87mm
Installation	4-Prong Rotating Mounting Bracket
Product Net Weight	1.2kg

## Front / Rear Panel



1. 2-channel power output interface, used to connect speakers with constant impedance output. It is recommended to use speakers of the same specification for optimal performance.
2. Bass audio output interface.
3. Local audio input interface.
4. WIFI pairing reset button, press and hold for 5 seconds to restore factory settings.
5. 10M/100M Ethernet port, used to connect to the local area network; support POE48V power supply function.
6. DC power interface, used to connect to a 24V DC power supply. (This function is optional.)